

OLD MEETS NEW

We would like to introduce the public to our newest attraction.

“El Mundo”



“El Mundo”

El Mundo is a super large Wave Swing, which is lifted from the entry level to a 3 meter higher level, with the clockwise rotating hood in the top of the mast tilted.

Because the mast, to which the hood is connected via a turntable, starts to rotate counterclockwise, a smooth, effective wave movement is created, which brings the Wave Swing riders into pleasant ecstasy.

The guests fly around in a diameter of 22 meters and experience the ride at a maximum eye level of even 9 meters in the highest wave movement.

The lowest position at eye level guests in bottom wave movement is 4.45m above the entry level.

There is room for 64 people, 48 adults and 16 children. Children with a height from 1m are allowed, sitting next to an adult companion, in the double seats.

From 1.20m height, everyone is welcome unaccompanied to make this sensational, but very pleasant flight.

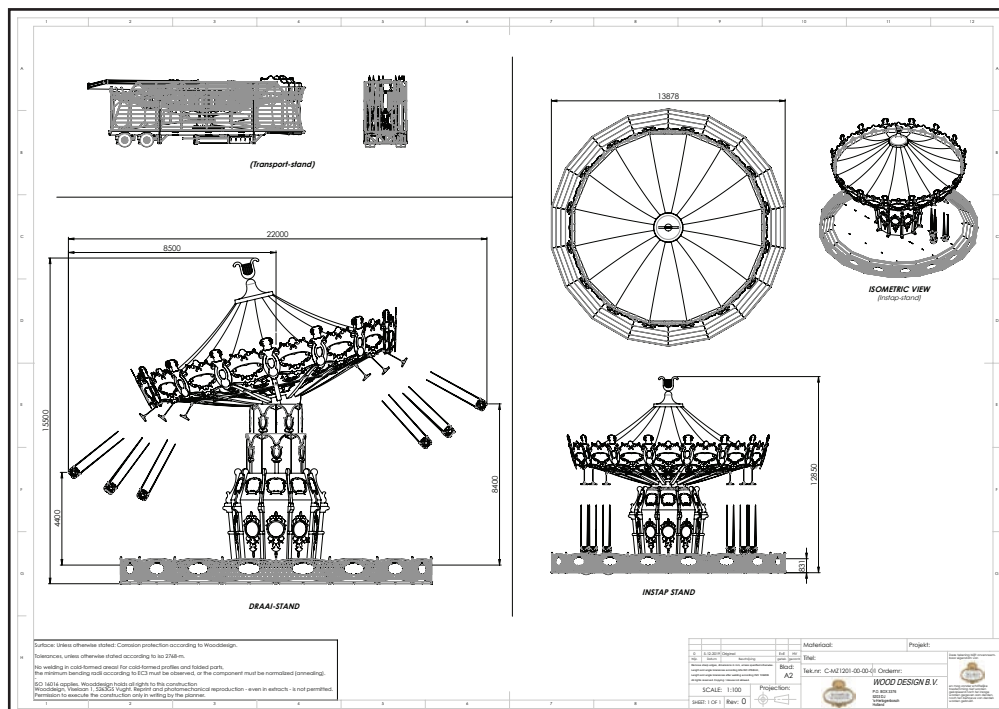
I don't want to deprive you of a few technical details, hence the following data:

- Diameter attraction stationary 12.50 meters.
- Diameter of the attraction in flight 22 meters.
- Attraction is mobile and can be assembled in 1 working day with 3 people.
- Attraction is on a podium of 4x18cm stairs about 75cm high.
- Seats 64.
- Required height up to and including ornamental top 15/16 meters in highest position.
- Hydraulic lift of 3 meters by means of 2 hydraulic cylinders, each good for 30 tons of lifting capacity, while only 20 tons of maximum lifting is required,
- connection value:

| | |
|--------------------------|---------|
| 2x motors hood 2x 7.5KW | = 15 KW |
| 1x mast motor 5KW | = 5 KW |
| Hydraulic mast 30KW | = 30 KW |
| Lighting 24 volt LED RGB | = 10 KW |
| Total | = 60 KW |

3x 125 Ampere nominal load

5 wire connection 380/480Volt. 3 phases, zero and ground.



Hand-painted scenes, referring to the most visited tourist locations in the world.







Decorations

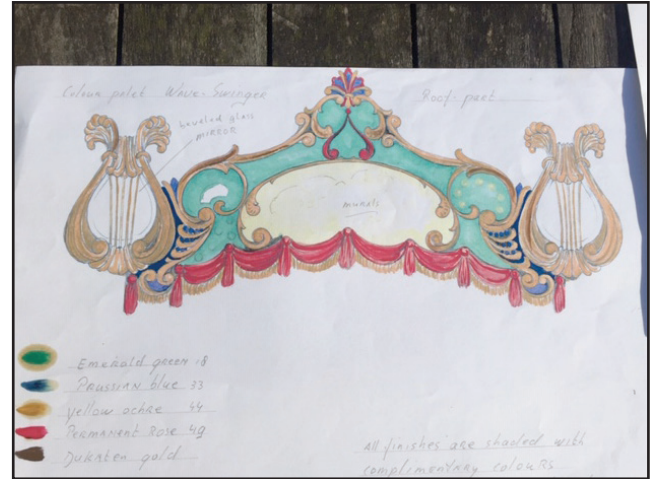
Theme, color pallet and hand painted panels.

The theme of the floating carousel refers to the classic English carousels in design and coloring, while the hand-painted third panels represent the world's most famous tourist sites, hence the name "El Mundo".

These scenes are depicted on the façade, ceilings and wings.

For the colors the inspiration came from the English Heritage style of attractions around the year 1900.

This is a fairly colorful palette, with multiple colors blending into each other. Ornamental curls are decorated throughout gold and



based on original old designs of classic English attractions. Faceted mirrors complement the whole.

silver and washed with transparent colors in Cadmium Red- Sap green and Phtalo blue.

Wash-in and hand decorations are done by hand in old-fashioned oil painting technique.

Everything covered with a satin varnish.

For the color palette used, pictures of antique English carousels are included as a reference for our decoration. All decoration panels are designed by hand in baroque style, after which molds have been made of the models to produce the panels.

It is a responsible colorful pallet colors

Lighting

The Wave Swing is, in contrast to its antique character, equipped with the most modern, safe 24 Volt LED lighting in R.G.B., color changing, flashing and running lighting, which makes for a truly breathtaking spectacle.

The combination of nostalgic structures with a modern LED light show is not uncommon today.

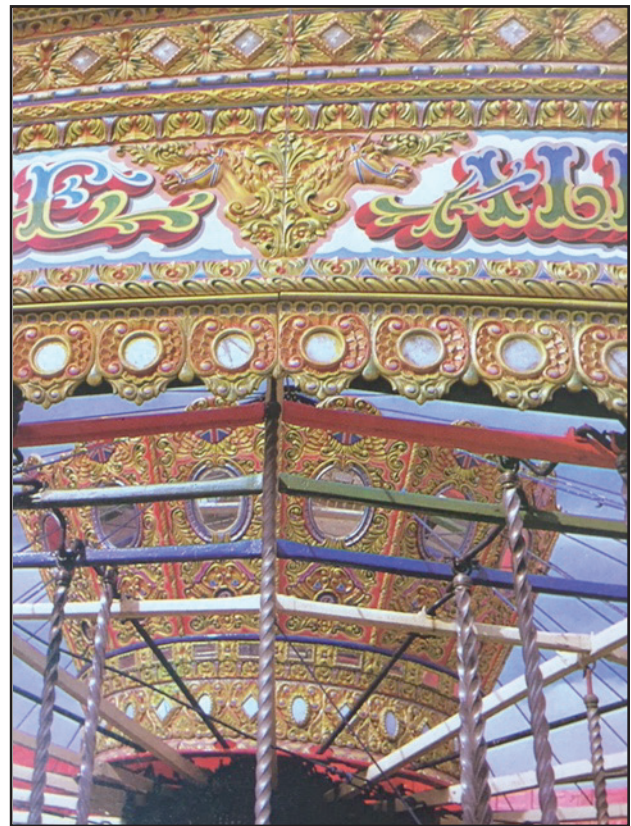


When we say "Old meets New", we say nothing too much about this "vintage" look-the attraction, which is also very innovative in terms of technology, mechanics and controls, bringing "Old and New" together in an exciting attraction.

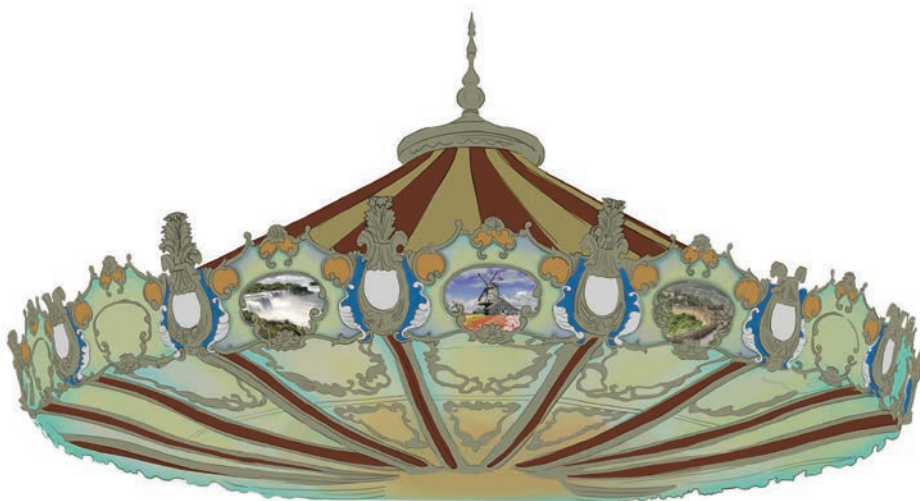
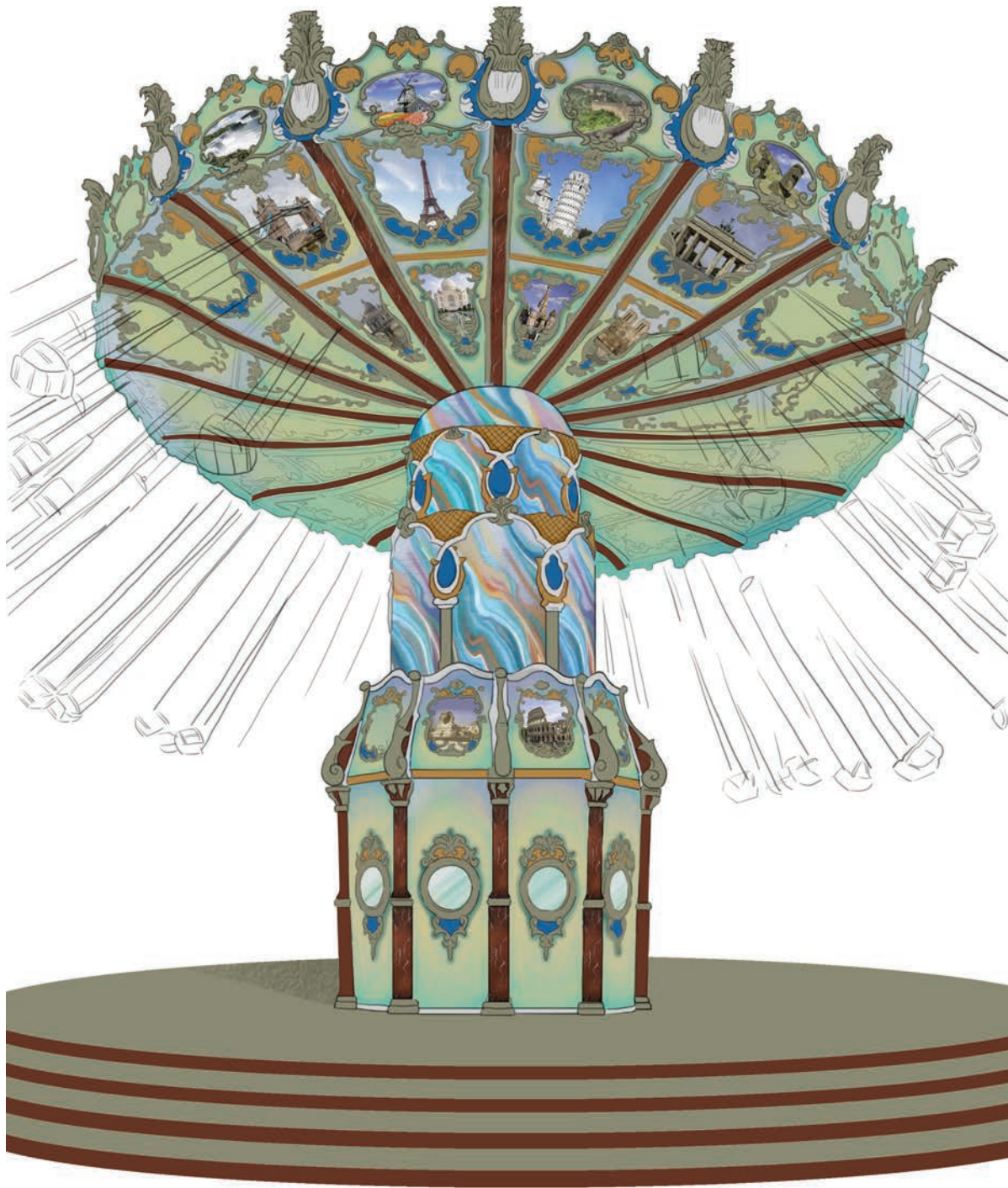
These super-sized gliders already existed around 1900, but they have disappeared from view because of the days of construction, which required a lot of personnel and from there became too expensive to be able to operate profitably.

Now built on a 13m long trailer and fully hydraulically foldable, which means it can be set up with 3 people in 1 working day. Incredibly fast and now profitable.

Inspiration for used colors, gold and silver effects based on English Vintage Carrousels around 1900.



Overviews ElMundo



Recent first assembly of “El Mundo”, almost in its final phase.

